

Fiandra

cod. 6672

composizione	100% Poliestere spalmato PVC	ignifugazione EN 13773	Classe1
peso ISO 2286-2	458 g/m ²	euroclasse EN 13501	C s3 d0
spessore ISO 2286-3	0,68 mm	solidità del colori agli UV ISO 105 B02	7/8
altezza	300 cm	coefficiente di apertura	3%
lunghezza rotolo	30 m		

Raster

cod. 6674

composizione	100% Poliestere spalmato PVC	ignifugazione EN 13773	Classe1
peso ISO 2286-2	458 g/m ²	euroclasse EN 13501	C s3 d0
spessore ISO 2286-3	0,68 mm	solidità dei colori agli UV ISO 105 B02	7/8
altezza	300 cm	coefficiente di apertura	3%
lunghezza rotolo	30 m		

Tela

cod. 6677

composizione	100% Poliestere spalmato PVC	ignifugazione EN 13773 DIN 4102-1	Classe1 B1 (DE)
peso ISO 2286-2	420 g/m ²	euroclasse EN 13501	C s3 d0
spessore ISO 2286-3	0,60 mm	solidità dei colori agli UV ISO 105 B02	7/8
altezza	320 cm	coefficiente di apertura	3%
lunghezza rotolo	30 m		

Dune

cod. 6680

composizione	100% Poliestere spalmato acrilico	coefficiente di apertura	3%
peso ISO 2286-2	208 g/m ²		
spessore ISO 2286-3	0,64 mm		
altezza	300 cm		
lunghezza rotolo	30 m		

Mosaico

cod. 6678

composizione	100% Poliestere spalmato PVC	ignifugazione EN 13773	Classe1
peso ISO 2286-2	387 g/m ²	euroclasse EN 13501	B s3 d0
spessore ISO 2286-3	0,57 - 1,03 mm	solidità dei colori agli UV ISO 105 B02	7/8
altezza	300 cm	coefficiente d'apertura	6%
lunghezza rotolo	30 m		

Intreccio

cod. 6679

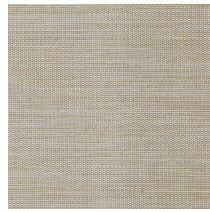
composizione	100% Poliestere spalmato PVC	ignifugazione EN 13773	Classe1
peso ISO 2286-2	410 g/m ²	euroclasse EN 13501	C s3 d0
spessore ISO 2286-3	0,58 mm	solidità dei colori agli UV ISO 105 B02	7/8
altezza	300 cm	coefficiente di apertura	5%
lunghezza rotolo	30 m		



D25 DUNE
 □ 300 CM g_{TOT} 0.40



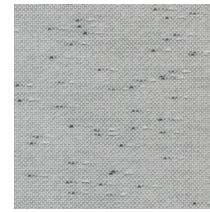
D06 INTRECCIO
 □ 300 CM g_{TOT} 0.37



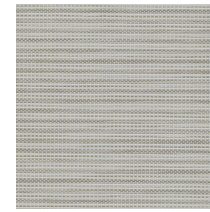
D07 RASTER
 □ 300 CM g_{TOT} 0.43



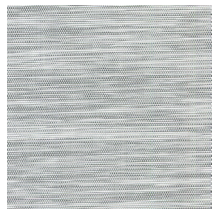
D05 INTRECCIO
 □ 300 CM g_{TOT} 0.37



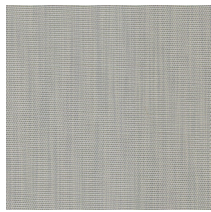
D01 MOSAICO
 □ 300 CM g_{TOT} 0.43



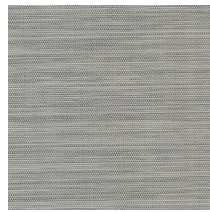
D04 INTRECCIO
 □ 300 CM g_{TOT} 0.39



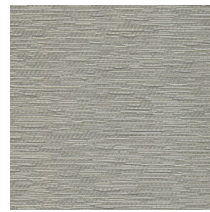
D24 TELA
 □ 320 CM g_{TOT} 0.36



D16 FIANDRA
 □ 300 CM g_{TOT} 0.43



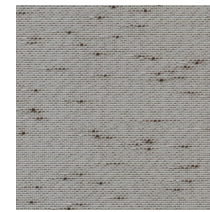
D23 TELA
 □ 320 CM g_{TOT} 0.38



D28 DUNE
 □ 300 CM g_{TOT} 0.42



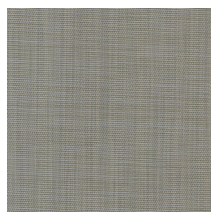
D26 DUNE
 □ 300 CM g_{TOT} 0.42



D03 MOSAICO
 □ 300 CM g_{TOT} 0.38



D08 RASTER
 □ 300 CM g_{TOT} 0.38



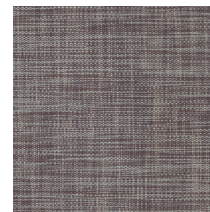
D15 FIANDRA
 □ 300 CM g_{TOT} 0.38



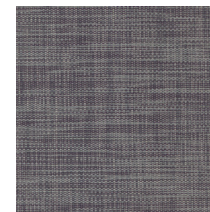
D02 MOSAICO
 □ 300 CM g_{TOT} 0.39



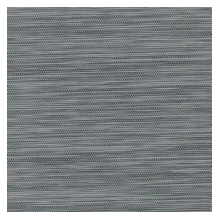
D27 DUNE
 □ 300 CM g_{TOT} 0.43



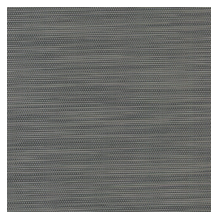
D11 RASTER
 □ 300 CM g_{TOT} 0.47



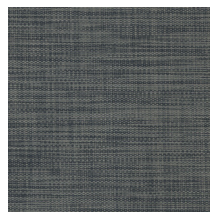
D13 RASTER
 □ 300 CM g_{TOT} 0.44



D22 TELA
 □ 320 CM g_{TOT} 0.45



D21 TELA
 □ 320 CM g_{TOT} 0.44



D12 RASTER
 □ 300 CM g_{TOT} 0.49



D29 DUNE
 □ 300 CM g_{TOT} 0.46



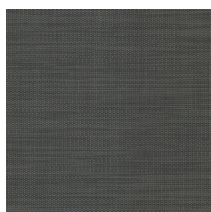
D30 DUNE
 □ 300 CM g_{TOT} 0.41



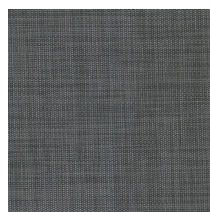
D19 TELA
 □ 320 CM g_{TOT} 0.53



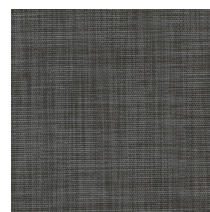
D14 FIANDRA
 □ 300 CM g_{TOT} 0.42



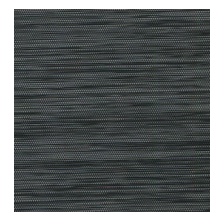
D09 RASTER
 □ 300 CM g_{TOT} 0.42



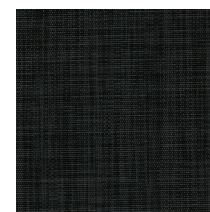
D10 RASTER
 □ 300 CM g_{TOT} 0.47



D18 FIANDRA
 □ 300 CM g_{TOT} 0.44



D20 TELA
 □ 320 CM g_{TOT} 0.53



D17 FIANDRA
 □ 300 CM g_{TOT} 0.49